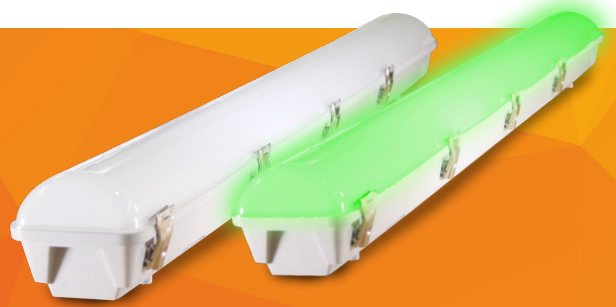


# [ENDURO]

## WEATHERPROOF LED BATTEN



### Description

The [ENDURO] is built with premium-grade materials, making it one of the most durable weatherproof LED battens on the market. The [ENDURO] features a large terminal block, heavy duty stainless steel clips and multiple knockouts for side and rear cable entry.



### Key Features

- Tri-colour and wattage selectable
- High efficiency up to 125lm/W
- Durable polycarbonate body and diffuser with stainless steel clips
- Screw point for optional vandal-proof installation
- GRP, Emergency and sensor options available
- Green (532nm) LED option available
- Easy quick connect mounting system



The [ENDURO]<sup>E</sup> automatically switches to its AS2293-tested emergency function when the mains power supply fails. Featuring over 150 minutes of emergency operation supported by high capacity and long lifetime LiFePo4 batteries. Rated C0 = D100, C90 = D63 across all models.

#### Features:

- 150mins Emergency operation
- Test button for self-test function
- High capacity
- LiFePo4 batteries
- 3 year battery warranty

#### EMERGENCY SPECIFICATION

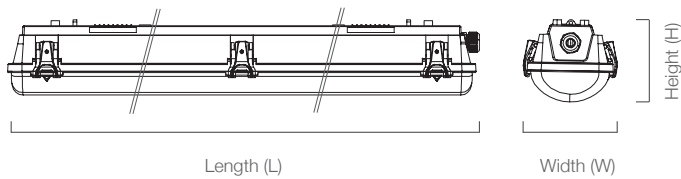
Emergency LED Power	4W
Output Current	32-110mA
Battery Charging Ambient Temp.	-20°C ~ +60°C
Battery Model	LiFePo4 YH11-403



### Technical Specifications

Rated Life	≥50,000 hours	Operating Temperature	-20°C to +45°C (+ 40°C Em)
Body	Polycarbonate	Input Voltage	200-264 VAC ~ 50/60Hz
Installation	Surface mounted, suspended	IP Rating	IP65
Beam Angle	120°	IK Rating	IK08
Power Factor	>0.95	Connection	Terminal block with quick connect gear tray
CRI	>83	Net Weight	1.1kg (600mm) (1.3kg Em) 1.9kg (1600mm) (2.2kg Em)
Surge	0.5KV		
Withstand Voltage	AC3750V		

### Dimensional Drawing



Wattage	L	H	W
18/9W (Standard)	600	108	120
28/14W (Standard)	1160	108	120
18/9W (GRP)	600	100	123
28/14W (GRP)	1200	100	123

Unit = mm

### Product Data

Part Number	Power	Lumen Output	CCT
BE-2-18S120 <i>(shift)</i>	18/9W	1170-2340lm	Tri-colour (3000K / 4000K / 5700K)
BE-4-28S120 <i>(shift)</i>	28/14W	1680-3780lm	Tri-colour (3000K / 4000K / 5700K)
BE-2-20G120	20W	Indication	Green (532nm)
BE-4-36G120	36W	Indication	Green (532nm)

Sensor option available, add '-S' to model code.  
Emergency option available, add '-E' to model code.  
Dimmable option available, add '-D' to model code.  
GRP option available, add '-P' to model code  
eg. BE-4-36S120-EPSP (Emergency, GRP, Sensor, Dimmable)

### Sensor Settings

Note: Default factory settings are in bold

Sensitivity	25% / 50% / 75% / <b>100%</b>
Hold Time	5s / 90s / <b>5min</b> / 25min
Daylight Sensor	10 lux / 30 lux / 50 lux / <b>100 lux</b> / Disable
Stand-by Period	1min / 5min / 25min / <b>+ ∞</b>
Stand-by Brightness	0% / 10% / <b>25%</b> / 50%

Note: For daylight sensor to activate, light needs to enter "Off" state via standby period setting or by cycling mains power

### GRP Specifications

Body	GRP
Diffuser	Polycarbonate
IK Rating	IK10
IP Rating	IP65
Weight	1.6kg (600mm) 3.0kg (1200mm)