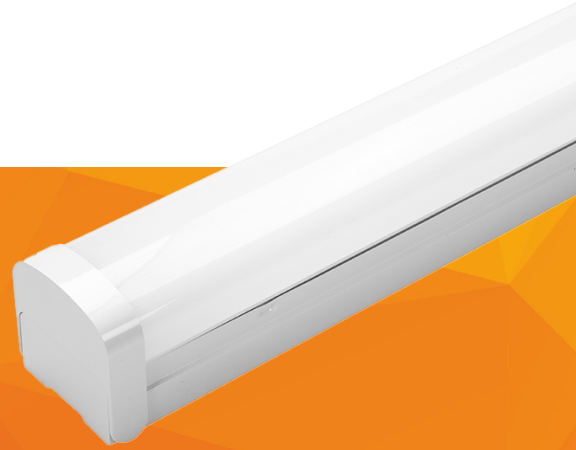


[CORSAIR]

LITE DIFFUSED LED BATTEN



Description

The [CORSAIR] LITE Diffused LED Batten offers high quality and high performance. Built with a robust yet light metal body, it features a quick-fit design for simple installation. The [CORSAIR] LITE comes standard as tri-colour and wattage selectable. This versatile fitting is also available in emergency versions.

Innovative Design

Engineered with a modular LED board and diffuser allowing the drive tray to drop for fast and toolless re-assembly.



Key Features

- Unique quick-fit diffuser and gear tray for easy installation
- Wattage and colour selectable for versatility
- Side or rear cable entry standard
- Emergency options available
- Large terminal block



**EMERGENCY
FUNCTION**

The [CORSAIR]^E automatically switches to its AS2293-tested emergency function when the mains power supply fails. Featuring over 150 minutes of emergency operation supported by high capacity and long lifetime batteries.

Features:

- 150mins Emergency operation
- Test button for self-test function
- High capacity
- 3 year battery warranty

EMERGENCY SPECIFICATION

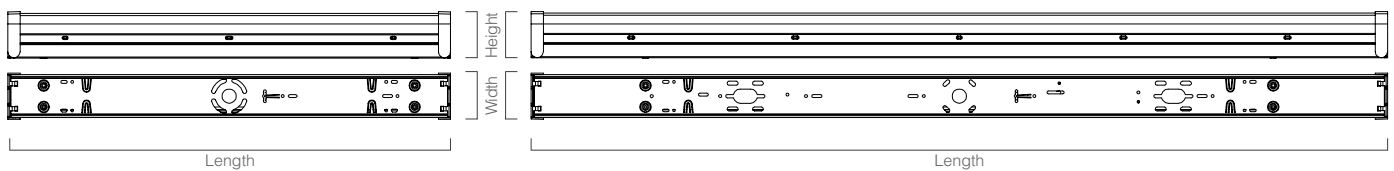
Emergency LED Power	2W
Output Current	80V/25mA
Battery Charging Ambient Temp.	0°C ~ +55°C
Battery Model	Cyantronic



Technical Specifications

Rated Life	≥50,000 hours	CRI	>80
Body	Steel, Polycarbonate	Operating Temperature	-20°C to +45°C
Installation	Surface Mounted	Input Voltage	220-240 VAC ~ 50/60Hz
Beam Angle	120°	IP Rating	IP20
Power Factor	>0.9	Connection	Terminal Block

Dimensional Drawing



Model	Length	Height	Width	Weight
BCL-2-16S120	620mm	65mm	65mm	0.66kg
BCL-2-16S120-E	620mm	65mm	65mm	0.86kg
BCL-4-30S120	1200mm	65mm	65mm	1.02kg
BCL-4-30S120-E	1200mm	65mm	65mm	1.22kg

Unit = mm

Product Data

Part Number	Power	Lumen Output	CCT
BCL-2-16S120*	8W/16W	1000lm-1920lm	Colour Selectable (3000K/4000K/5700K)
BCL-4-30S120*	15W/30W	2000lm-3600lm	Colour Selectable (3000K/4000K/5700K)

*Emergency option available, add '-E' to model code, eg: BCL-4-30S120-E