

# TEKNIK

LIGHTING SOLUTIONS

## [KILO]

SLIM LED BATTEN

USER MANUAL



**3**  
YEAR

PRODUCT  
WARRANTY

**S:**

COLOUR  
SELECTABLE

**IP  
20**

INGRESS  
PROTECTION

5/26-34 Dunning Ave, Rosebery NSW 2018 | 1300 313 780 | [info@techniklighting.com.au](mailto:info@techniklighting.com.au)

[www.techniklighting.com.au](http://www.techniklighting.com.au)

## INTRODUCTION

Thank you for selecting the [KILO] Slim LED batten. Please ensure that the luminaire is installed in accordance with the below instructions. **Teknik Lighting Solutions Pty Ltd** assumes no responsibility for inappropriate use or installation of the product, including any associated damage caused.

Features:

- > True 3 year warranty.
- > Tri-colour for versatile installation.

## PRECAUTION

1. Read the entire manual carefully prior to installation and operation.
2. The warranty period is listed on the product as well as on the packaging. Teknik will repair or replace the product if it becomes defective under normal use due to a manufacturing defect within the prescribed period.
3. Declared lumen output is based upon measurements obtained during operation on the appointed LED electronic driver under standardised laboratory conditions.
4. Installation must be performed by a licenced and qualified electrician, in accordance with these instructions and relevant Australian Standards.
5. Instant restart is allowed.
6. Do not change or tamper with any internal electric circuits, add any wires, connectors or cables for any reason.
7. Please do not insert any physical objects of any nature into the fitting as this may cause electric shock, malfunction or damage to the products.
8. Before replacement of the fitting turn the power off and allow to cool down.
9. In case of weight discrepancy when replacing old lamps, please ensure that the mounted structure is rated to withstand the weight of the new lamp and installation materials.
10. For further information, please contact Teknik ([www.tekniklighting.com.au](http://www.tekniklighting.com.au)) or your local distributor.

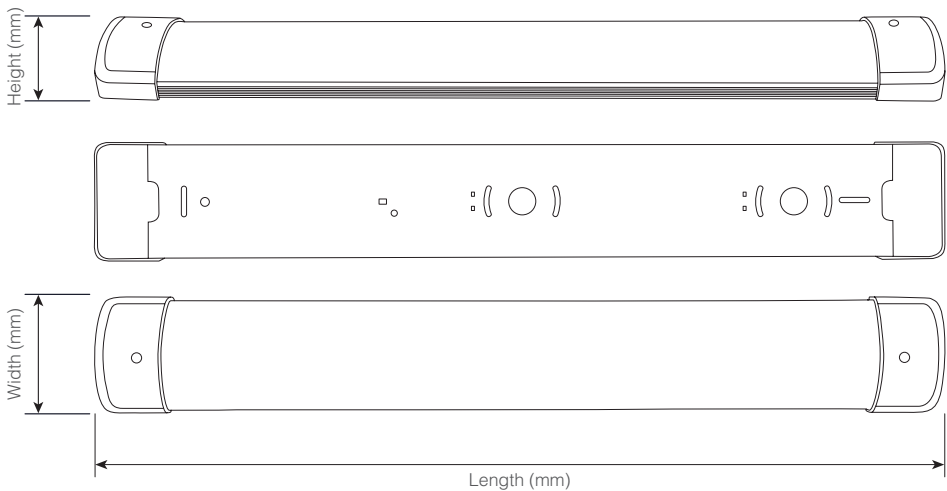
## DISCLAIMERS

1. This product must be installed and used as per these instructions.
2. This product contains no serviceable parts and no attempt should be made to repair this product. If the product is faulty it should be discarded.
3. This product is not suitable for installation in hazardous and/or corrosive areas.
4. Electrical installations periodically receive transient over voltages. This product has been designed to minimise the effect of such voltages on connected equipment. It may not give full protection for extreme over-voltage transients such as those resulting from a close lightning strike.
5. This product utilises intellectual property in the form of registered designs, trademarks, and/or patents. Such intellectual property remains the property of Teknik Lighting Solutions Pty Ltd in all cases.

## SPECIFICATIONS

Model	BK-2-20S120	BK-4-40S120
Input Voltage	180-240VAC ~ 50/60Hz	
Power	20W	40W
Lumen Output (Normal)	1800lm	3600lm
Colour Temperature	Tri-Colour (3000K/4000K/5700K)	
CRI	≥Ra80	
Beam Angle	120°	
Connection	Terminal Block	
Lifetime	≥30,000 hours	
IP Rating	IP20	
Usage	Indoor Usage Only	

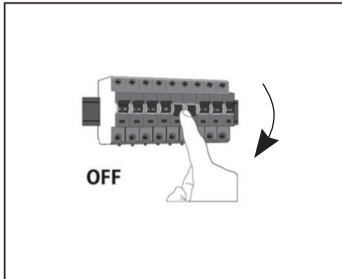
## DIMENSIONAL DRAWING



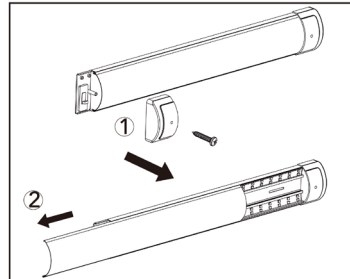
Model	Length mm	Width mm	Height mm	Weight kg
BK-2-20S120	600	83.4	37.8	0.39
BK-4-40S120	1200	83.4	37.8	0.62

## INSTALLATION

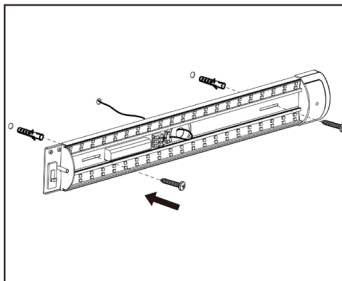
1. Ensure mains supply is switched off before commencing work.



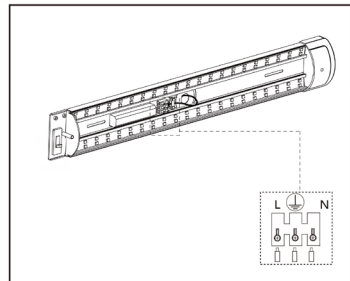
2. Remove the cover at the CCT switch end by removing the screw. Remove the diffuser.



3. Mark appropriate fixing points on wall or ceiling; check that fixings will not impinge on concealed cables or pipes before drilling holes.

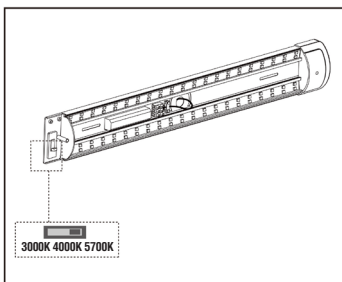


4. Connect supply cables to fitting terminal: Live/Brown to L, Neutral/Blue to N and Earth/Green-Yellow to E.



5. The default setting for the fitting is 4000K. Move switch to select 3000K or 5700K.

**WARNING: ENSURE THE LUMINAIRE IS TURNED OFF BEFORE SELECTING CCT.**



6. Refit the diffuser and the end cover. Ensure it is secure.

